

AER2200

Solution: NetCloud Service for Branch ■ **Application:** Medium Branches, Restaurants/Retail, Store-within-a-store

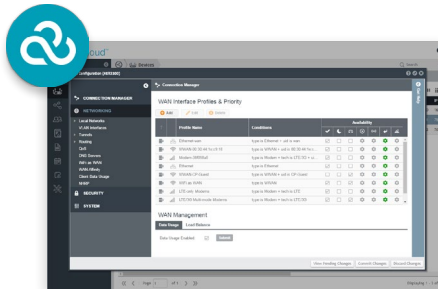
Designed for small to mid-sized branches, the Cradlepoint AER2200 is an all-in-one router that offers organizations the high availability of embedded Gigabit-Class LTE and ease of use of point-and-click cloud management. The AER2200 is an ideal solution for retail stores, clinics, restaurants, and stores-within-stores.

With wired and wireless routing, foundational SD-WAN, embedded Gigabit-Class LTE, WiFi, and comprehensive security, the cloud-managed AER2200 greatly simplifies branch networking. The AER2200 offers single-pane-of-glass management for the entire branch site, including Cradlepoint APs and IoT devices.

Cradlepoint AER2200 is sold with the NetCloud Essentials Plan, an all-inclusive networking service package comprised of services, hardware, and support.

NetCloud Solution Packages include:

- Award-winning remote cloud management & network intelligence with NetCloud Manager
- Customer choice of purpose-built hardware
- 24x7 support & limited lifetime warranty
- Option to purchase add-on plans for Advanced functionality



Key Features

- Cloud-managed for remote management, visibility & reporting of connected branch devices
- Zero-touch deployment & Day-1 Internet without on-site IT staff
- Wired & wireless routing for flexibility & high availability
- Foundational SD-WAN to ensure optimal application performance & uptime
- WiFi coverage & single-pane-of-glass management with Cradlepoint Access Points
- Deep wireless analytics
- Second modem slot for redundancy or upgradability
- Advanced Out-of-Band Management for alternative path troubleshooting
- PCI-Compliant
- Unified edge security including firewall, IDS/IPS & internet access & filtering
- Includes NetCloud Perimeter for reliable IoT overlay security



Benefits

Increase Network Availability

- Embedded LTE with HSPA+ fallback for high availability
- Foundational SD-WAN capabilities orchestrate wired & wireless links
- Dual-modem capable for primary, failover, or load balancing
- Real-time alerts to monitor vital network signs

Deploy & Scale Quickly

- Includes NetCloud Manager to increase speed of deployment with “zero-touch” configuration
- Manage, monitor & troubleshoot remotely

Secure & Protect

- Unified edge security
- PCI-compliant network component
- Encrypted & perimeter-secured overlays that protect branch IoT devices & isolate them from other networks
- FIPS 140-2 Inside versions available
- Certified on multiple public safety networks

Extend & Customize

- Router SDK: supports unique applications with custom scripts running on the router
- NetCloud API: utilizes router data while maintaining single-pane-of-glass network management

Quick Specs

Enterprise Grade LTE Modem	Supports up to 1.2 Gbps download & 150 Mbps upload*
Ports (LAN / WAN)	1 GigE WAN, 9 GigE LAN (switchable)
WiFi	Dual-band, dual-concurrent Gigabit WiFi (802.11 a/b/g/n/ac) Wave 2
PoE	Up to 4 ports high power .at PoE out (2 .af power w/default power supply)
Ruggedized	No
Housing	Metal
Operating Temperature	0°C to 50°C (32°F to 122°F)
Dual Modem Support	1 embedded, 1 integrated
GPS / GNSS	Yes, with active antenna
Processor	716 MHz quad-core processor

NetCloud Service Plans with the AER2200

Package	Part Numbers†
North America:	
NetCloud Branch Essentials Package (NA)	BAX-2200120B-NNN
NetCloud Branch Essentials Package (NA)	BAX-22001200-NNN
NetCloud Branch Essentials Package (NA)	BAX-2200600M-NNN
Europe:	
NetCloud Branch Essentials Package (EU)	BAX-2200120B-EWE
NetCloud Branch Essentials Package (EU)	BAX-2200600M-EWE
NetCloud Branch Essentials Package (UK)	BAX-2200120B-EWU
NetCloud Branch Essentials Package (UK)	BAX-2200600M-EWU
Asia-Pacific:	
NetCloud Branch Essentials Package (AP)	BAX-2200120B-PWP
NetCloud Branch Essentials Package (AP)	BAX-2200600M-PWP
All Regions:	
NetCloud Branch Advanced Plan Upgrade	BAX-NCADV

*Theoretical maximum speed, x = 1, 3, or 5 years, †Additional versions available with different modem configurations.

Comprehensive 24x7 Support & Limited Lifetime Warranty

Cradlepoint’s all-inclusive NetCloud Service Plan includes limited lifetime hardware warranty and global 24x7 enterprise-class support (phone support: 24-hour weekdays with emergency response on weekends; web: 24x7, chat: 24x5). With comprehensive support and warranty, Cradlepoint solutions are designed to keep networks secure, problem-free, and operationally efficient. For more information, visit cradlepoint.com/support-services.

[Learn more at cradlepoint.com/aer2200](http://cradlepoint.com/aer2200)

